

ASL 3: Week 5

ASL Slang, Idioms & Register

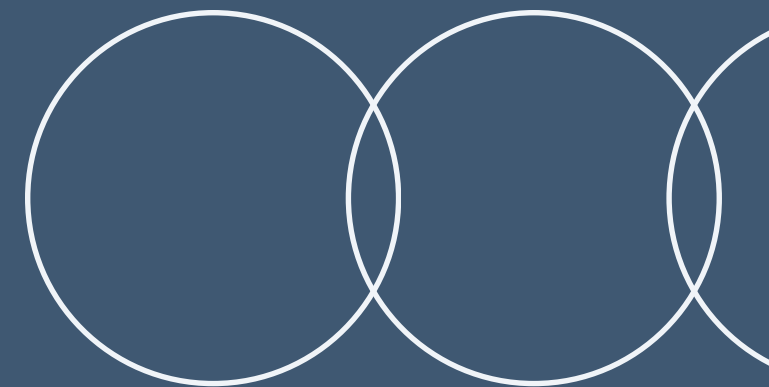
Fred Miller



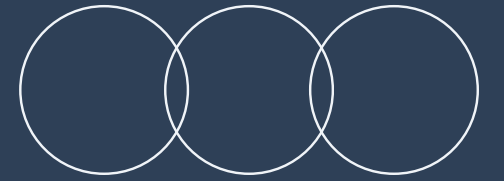
Weekly Focus

Understanding Deaf Signage

This week concentrates on **understanding natural Deaf signing** through the exploration of slang, idioms, and register changes, which are essential for authentic and effective communication within the Deaf community.



Learning Goals



Objectives for ASL understanding

Recognizing ASL Slang

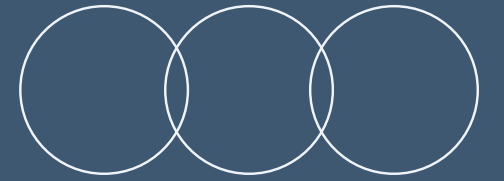
Students will learn to recognize and understand **common ASL slang** used in everyday conversations. This includes identifying various expressions that convey nuanced meanings, enhancing their ability to engage in authentic interactions within the Deaf community.

Using Idiomatic Expressions

Appropriately using idiomatic expressions in ASL will help students convey their thoughts more effectively. By mastering these phrases, they can enrich their communication skills, ensuring clarity and relatability when interacting with others in diverse settings.

Grammar & Register

Focus



Understanding ASL Communication Nuances

Register Shifting

Adjusting your signing style based on the audience and context is crucial. Formal settings may require more structured signs, while casual interactions benefit from relaxed and familiar expressions.

Facial Grammar

Facial expressions are essential in ASL to convey tone and attitude. They enhance meaning by indicating emotions like sarcasm or seriousness, adding depth to signed conversations.

Shortened Structures

In natural conversations, ASL often employs shortened structures that mimic spoken language. These efficient forms streamline communication, making interactions more fluid and reflective of everyday speech patterns.

ASL Slang & Idioms

TRAIN-GONE-SORRY

This expression signifies a missed opportunity, illustrating how timing is crucial in communication and understanding.

UNDERSTAND-ME?

A common idiomatic expression employed to check comprehension, ensuring that the message is received clearly.

FINISH++

An emphatic way to indicate completion, reinforcing the finality of a task or statement in conversational ASL.

SAME-OLD SAME-OLD

Used to describe a routine situation, conveying a sense of familiarity and lack of change in context.

WOW / REALLY?

This phrase serves as an expression of surprise or emphasis, highlighting reactions to unexpected information or statements.



Dodo?

what are you doing?

what do we do?

what do I do?

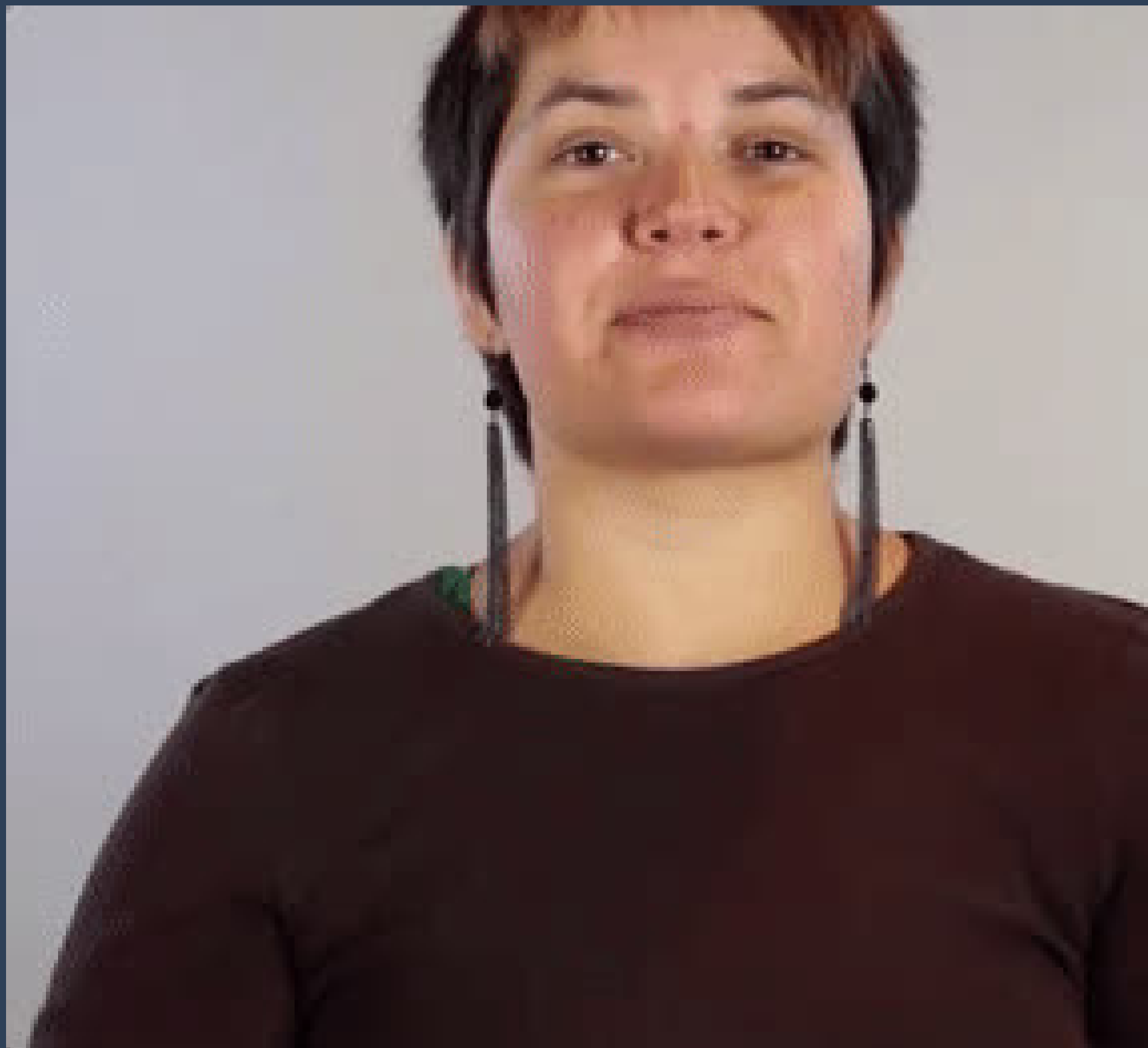
what's the plan?



Oh I See

(2 signs here)

Both the
fingerspelling O-I-C
or the Y-handshape
bouncing up and
down.



Bai

**badass => bad/bai.
(B-A-D but with a
bounce).**



Vee

**badass => bad/bai.
(B-A-D but with a
bounce).**



Opt (Hard)

it extracts the concept behind: "I'll shush now" or "I'm mistaken" or "I'm hoping not". Opt can be, and often is, signed without "hard", e.g.: "I opt...."



**(walk that
far?) | Athe**

**Similar to, "can't be
arsed". Derived from
the sign for bore(d).**



Nostril Curl

"Yeah, I know." or
used to answer
yes/no questions.



Tru Biz?

"For real?",
"actually", etc.



Finish

"Finish." / "Knock it
off"



For-for

what for? / Why?



**Not my
problem /
not my fault**

**Often used by
children like, "I
DIDN'T DO IT!"**



Pei

**Expertised or
talented, etc**



kissfist

"Adore", "like", "I
kissfist her
performances."



Pah

A term strongly associated with the success of the 1988 Deaf Protest Now, demanding an actual Deaf person be employed as President at Gallaudet University, the world's only Liberal Arts College for the Deaf. Also, "finally". "I pah saw the play!"



whoa

**Y handshape circling
the face, 1 or 2
hands**



Eyepop

When your eye pops, it looks like that, so, a visual sample of an eyepop. "I eyepop-saw that the tickets are out now!"



(Sorry) Train Zoom

**Classic ASL idiom --
"the train has left",
as in, "Your loss" or
"I'm not repeating
myself".**



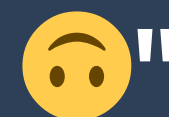
bomp

**"welp." In sentence:
"I came up with a
good comeback and
he bomp'd."**



Important Cool

"What's important?
Keeping your cool,
so...let's move on
and play this cool





Garage Door

"I lost interest." (my door's now closed).



Discuss Dry

The discussion has
run dry.



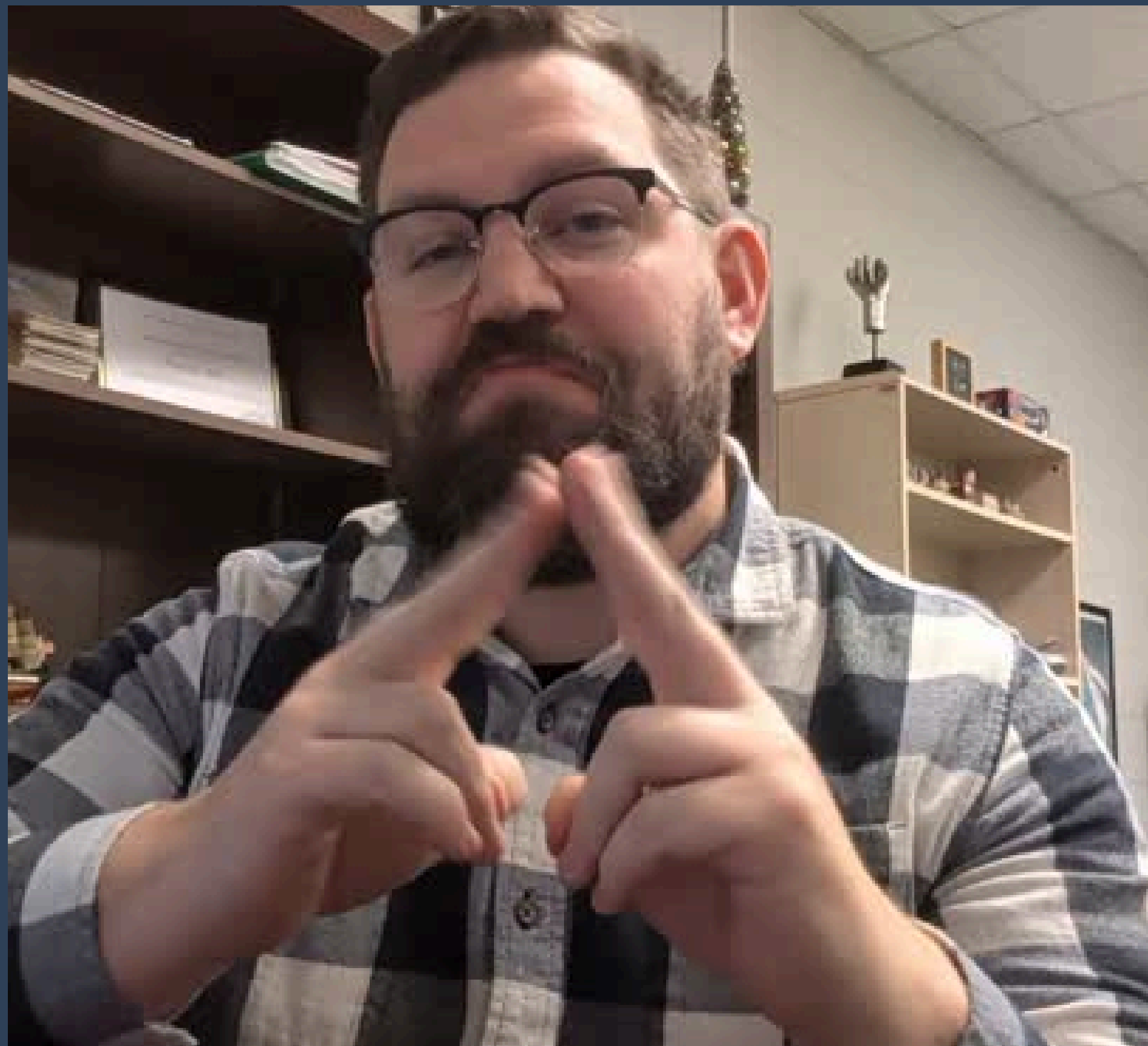
"I second that"

Used for: used to mean "I'll go after you" or to an object, "if you don't want it, I'll take it".



Bing

Used for: used to mean "I'll go after you" or to an object, "if you don't want it, I'll take it".



258

Used for: used to mean "I'll go after you" or to an object, "if you don't want it, I'll take it".



ACCEPT-HARD

Means to "suck it up" or handle something tough.



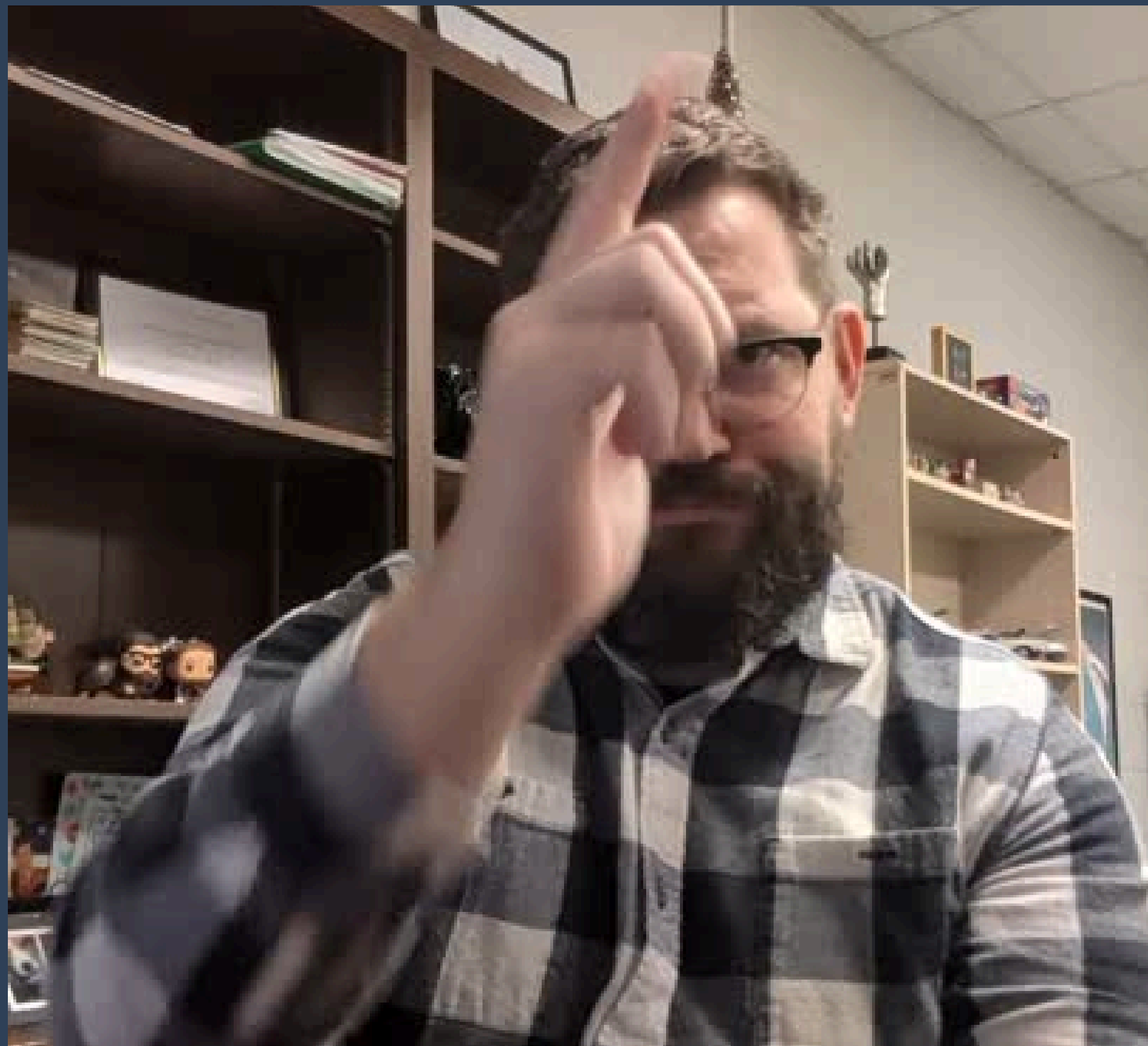
CLOSE-BY-A- HAIR:

Means "barely" or a
"close call"



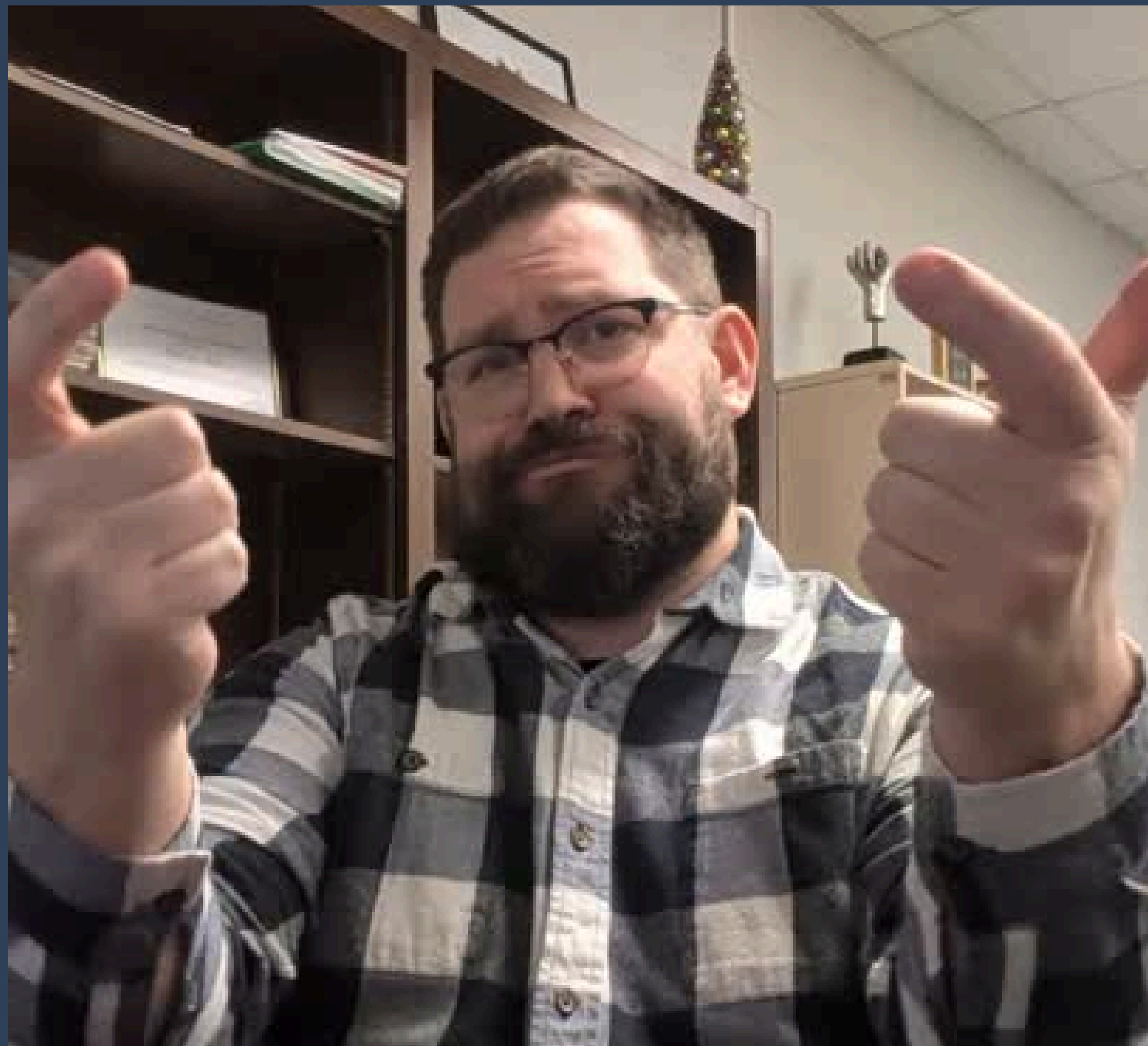
Finish touch

It means you already
have been there
before, already
experienced it
before and already
had



Think yourself

It's like "up to you"
"do what you want
to do" I just used an
ASL slang which is
"That"



Big Brain

It means like wow
you are so smart/
you already knew!



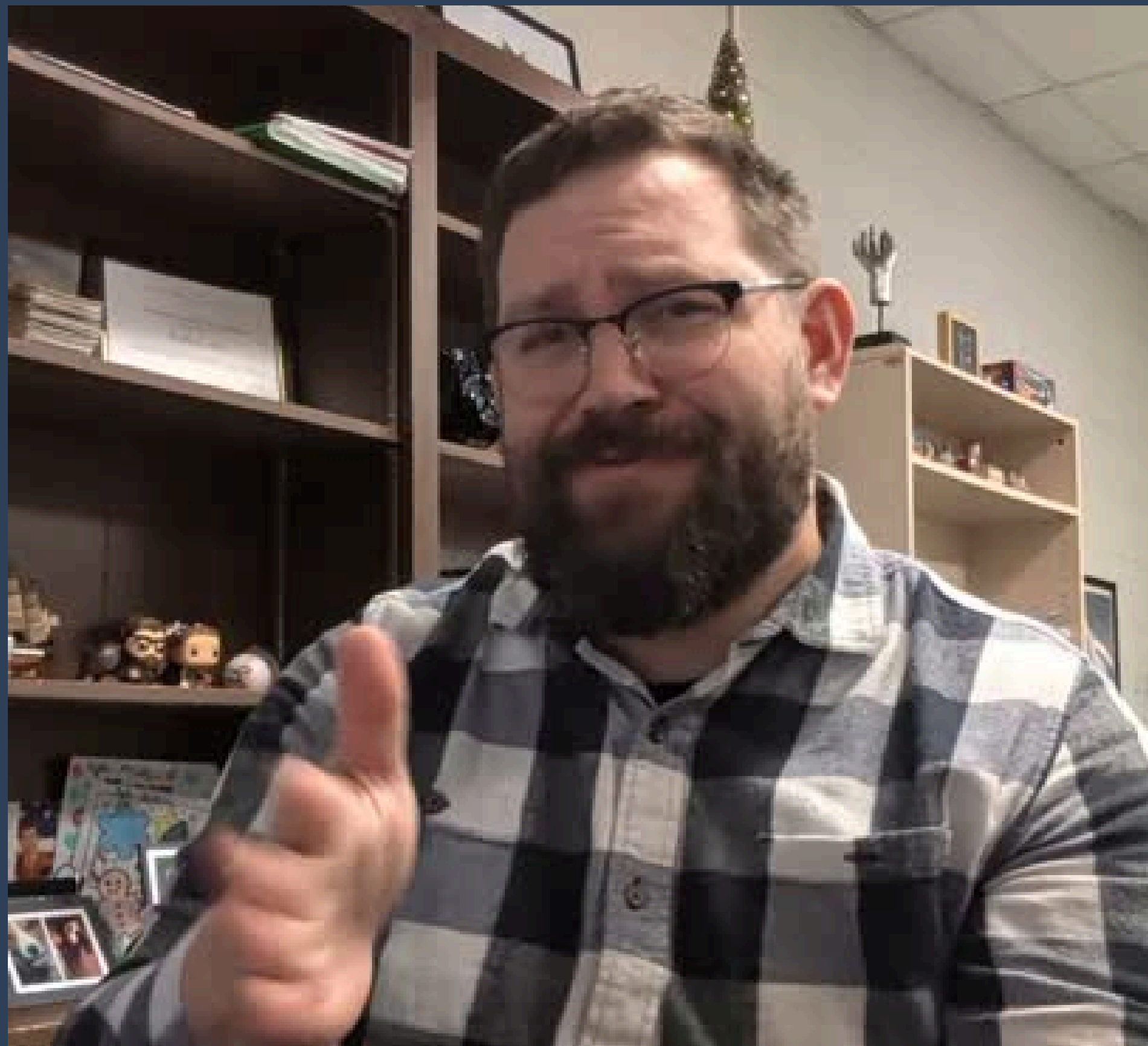
Fed-up

It's like you are just done, "I'm so done" and had enough of it



Fsh Fsh

It means just finish
it, and emphasis it



Swallow a Fish

It means someone
who is gullible, who
will believe
anything.

[Click to watch Youtube](#)

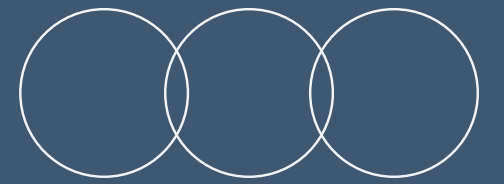
**LR-LR - look over there (subtle),
check it out, Ewitty in a white
shirt**

**LK - dont want to, I'm
good/brag - or LUH - blue shirt**

**WHA - what are you saying? -
green shirt**

**All three of these are mouthing
morphemes - see examples
here (and give Ewitty a
subscribe).:**

In-Class Activities



Slang Usage Demonstration

Students practice demonstrating ASL slang in a lively group setting.



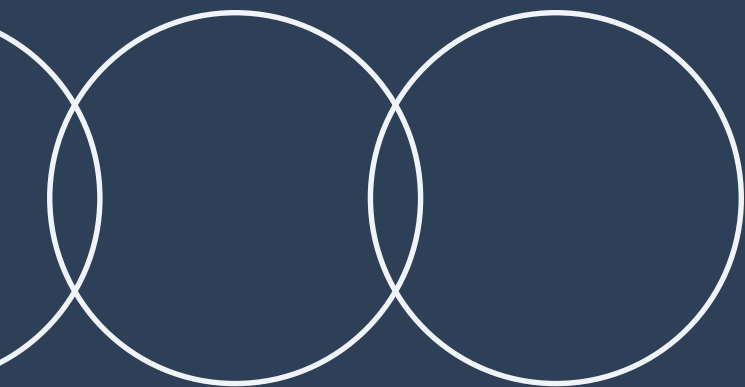
Context Matching

Participants match ASL slang to appropriate contexts for better understanding.

Practice at Home

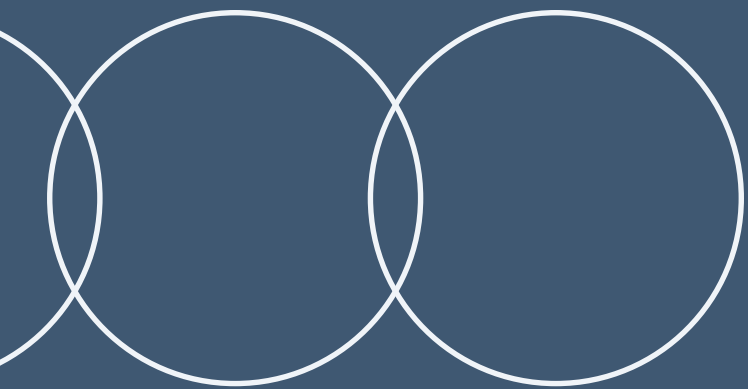
Engaging with ASL

To enhance your skills, observe Deaf signing videos without captions. This practice helps you recognize **natural expressions** and improve your use of slang in conversations.



Meaning in ASL

Understanding ASL is not just about the **individual signs**; it's crucial to recognize the context and expression behind them. ASL incorporates various registers, allowing signers to convey their emotions, attitudes, and intentions clearly. Tone can be expressed through **facial expressions** and body language, which significantly impact the meaning of a signed message. Additionally, idiomatic expressions and slang are essential for capturing the nuances of everyday conversation within the Deaf community. Therefore, authentic communication hinges on recognizing both the **context** and the expressive elements of ASL that shape understanding.



Any Questions?

Let's discuss your thoughts and insights today

