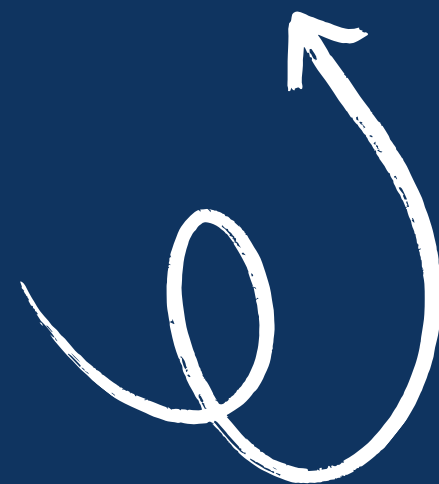


# ASL 3: Classifiers & Spatial Accuracy

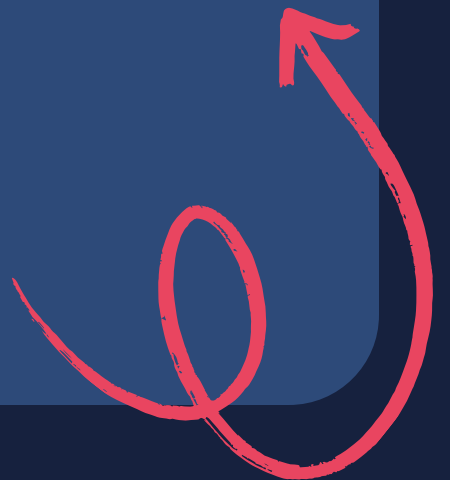
Fred Miller (Week 2)



# Weekly Focus

## Understanding Classifiers in ASL

This week emphasizes using classifiers (CL) to **visually represent** people, objects, movement, and location, enhancing spatial accuracy in ASL storytelling and improving clarity in communication.



# Learning Goals

## Key objectives for this week

### Replace Over-signing

It's essential to **replace over-signing** with clear depictions. This approach enhances visual representation, making ASL storytelling more effective and engaging for the audience.

### Show Movement

Students should focus on how to **show movement and location** clearly. This clarity enables better understanding and visualization of actions and interactions within ASL narratives.

### Maintain Consistency

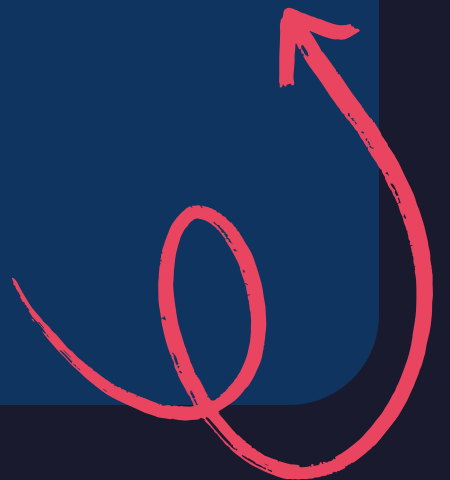
Maintaining **spatial consistency** in ASL is crucial. It allows the signer to develop a seamless flow in storytelling, ensuring that the audience can easily follow along.



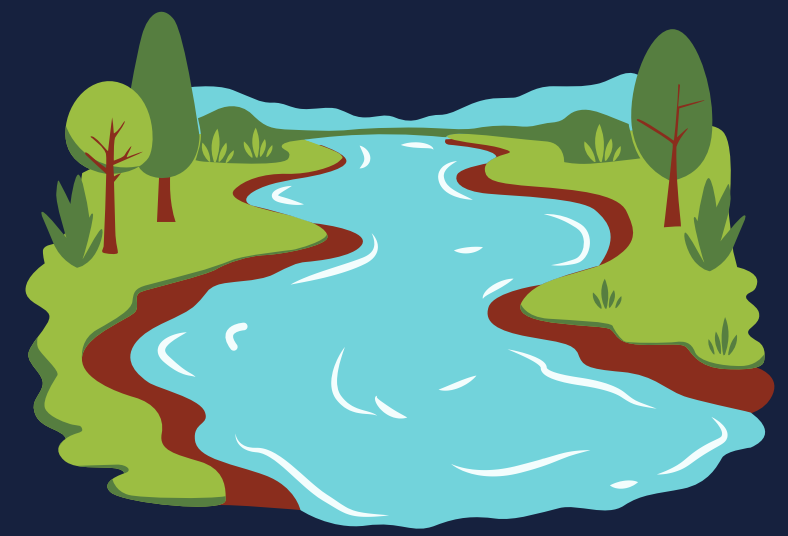
# Grammar Focus

## Understanding Spatial Accuracy in ASL

Spatial grammar is essential for accurate **storytelling** in ASL. It involves setting locations clearly, ensuring consistent referent placement, and achieving agreement through movement, eliminating unnecessary signs.



# Locations



# Key Skills Practiced

## Understanding Classifiers in ASL

### CL:1 (People)

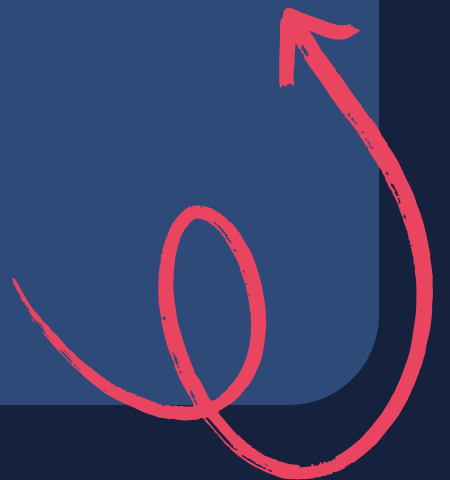
CL:1 is used to represent individuals and groups, providing clarity in communication about movement, location, and action. Mastering this classifier enhances spatial storytelling in ASL.

### CL:3 (Vehicles)

CL:3 signifies vehicles, allowing signers to describe their actions and placements effectively. Proper usage conveys important information about movement and interactions with the surroundings.

### CL:B (Flat Surfaces)

CL:B represents flat surfaces, such as tables or floors. This classifier helps in accurately depicting context and spatial dynamics within a signed narrative, enriching understanding and clarity.





# ASL Classifiers | Describing Things in ASL



Copy link



LearnHowToSign.com  
Watch on YouTube

CL:1 (People)	CL:2 (Group/Legs)	CL:3 (Vehicles)	CL:4 (classifier 4)
CL:5 (classifier 5)	CL:A (classifier A)	CL:B (classifier B)	CL:C (classifier C) Flat, Bent, & Curved
CL:F (classifier F)	CL:G (classifier G)	CL:L (classifier L)	CL:L (Curved)
CL:R (classifier R)	CL:V (classifier V)	CL:V (Bent)	CL:Y (classifier Y)
CL:11 (Size)	CL:BB (Size)		

# In-Class Activities

## Engaging strategies for learning classifiers

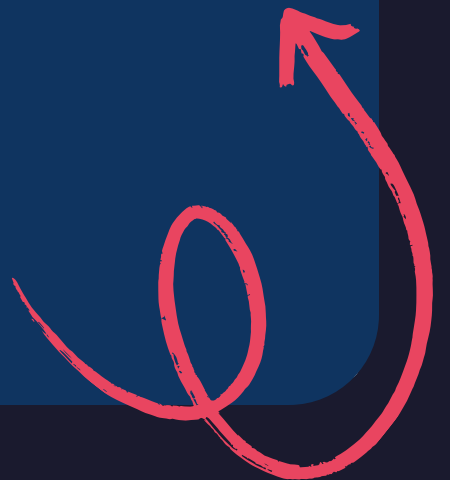
This week, students will participate in **classifier-only demonstrations**, partner movement descriptions, and acting out stories to enhance their embodied learning and improve spatial accuracy in ASL.



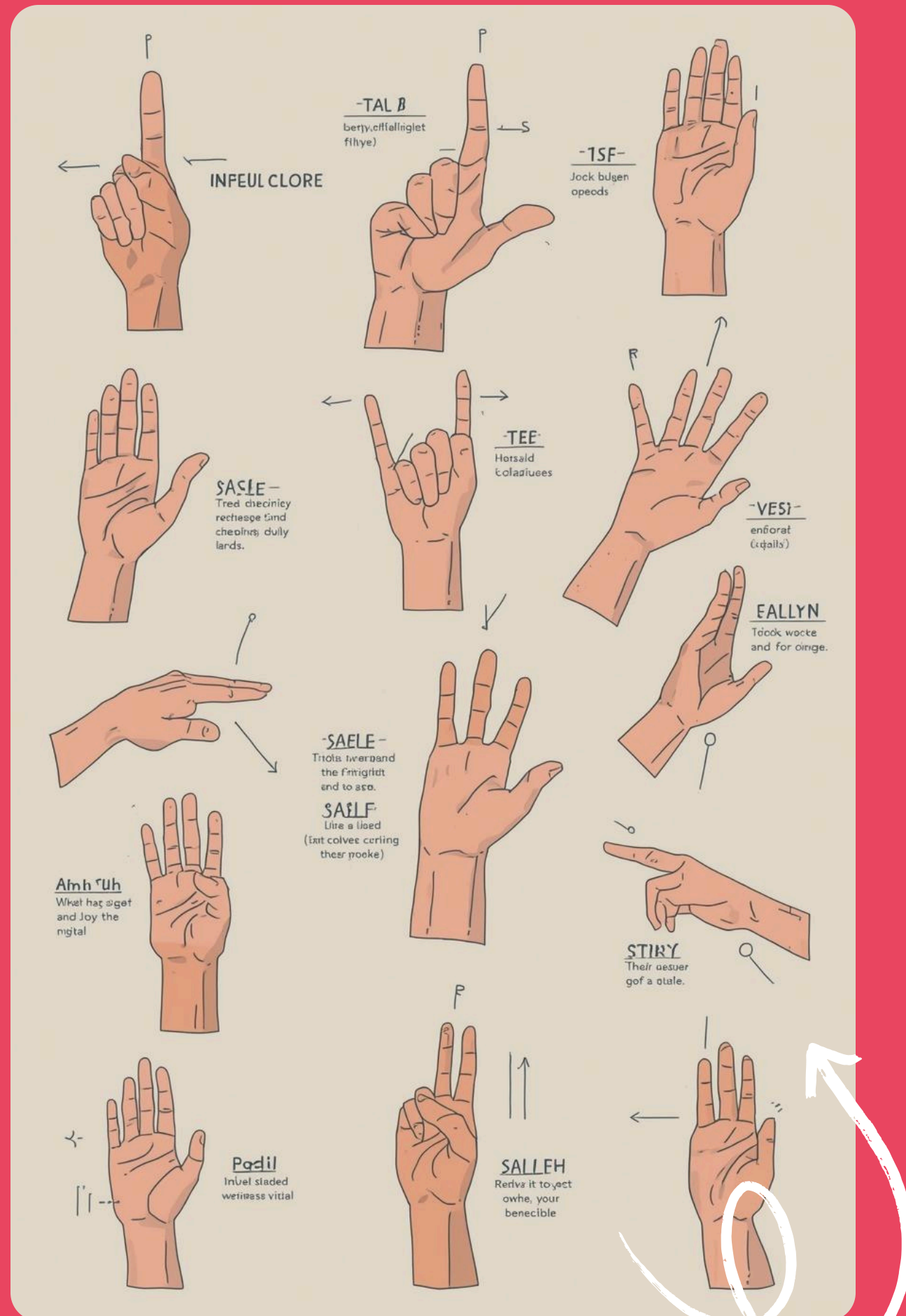
# Practice at Home

## Using Classifiers for Storytelling

Encourage students to **describe a short trip** using only classifiers. Focus on demonstrating speed, direction, and stops, enhancing their visual storytelling and spatial accuracy skills in ASL.



# Reminder



Apply classifiers for effective communication