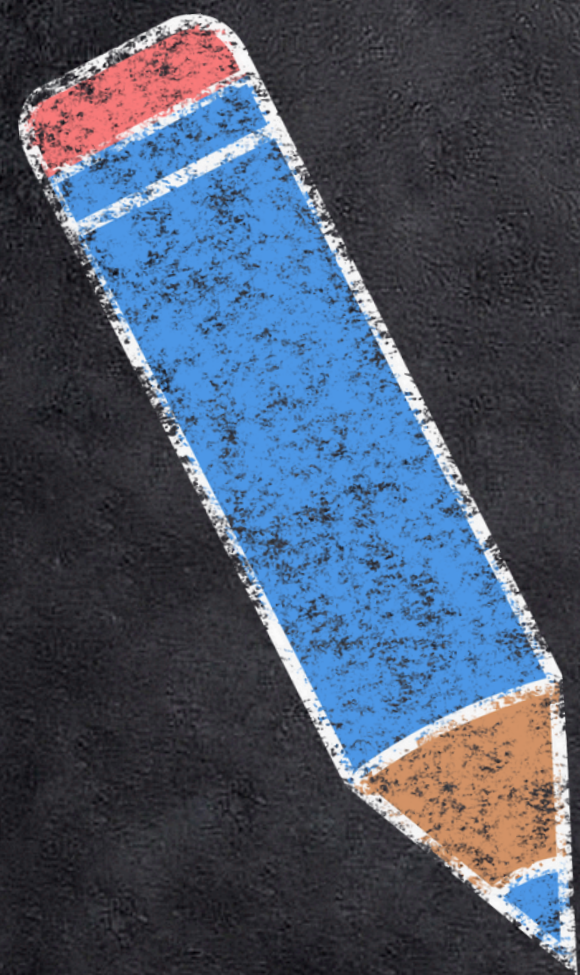
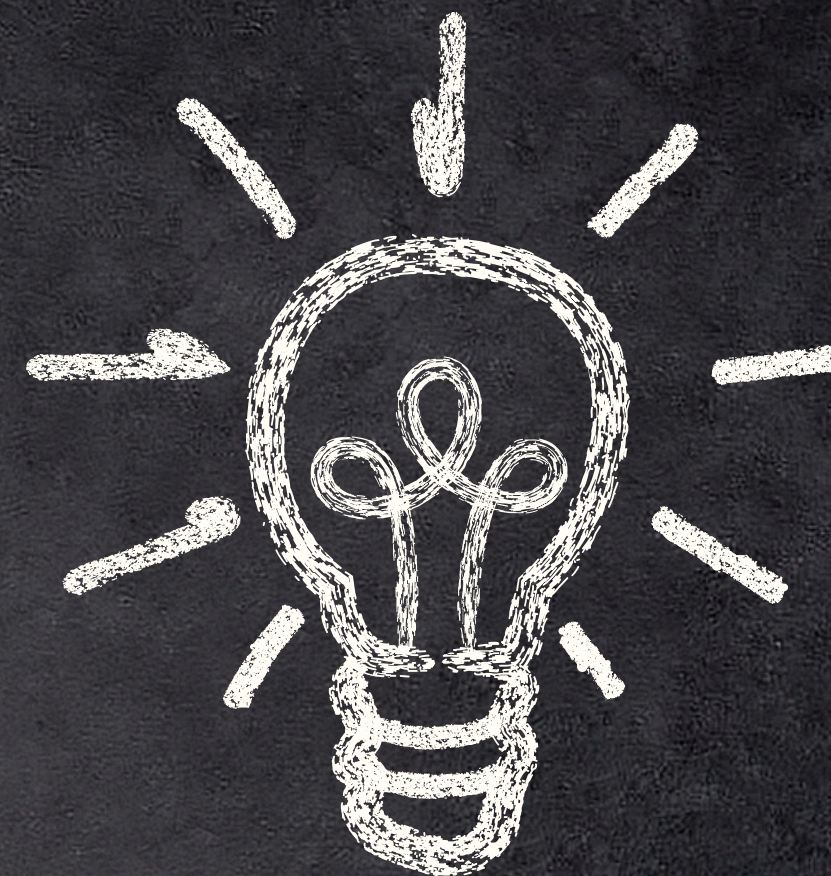
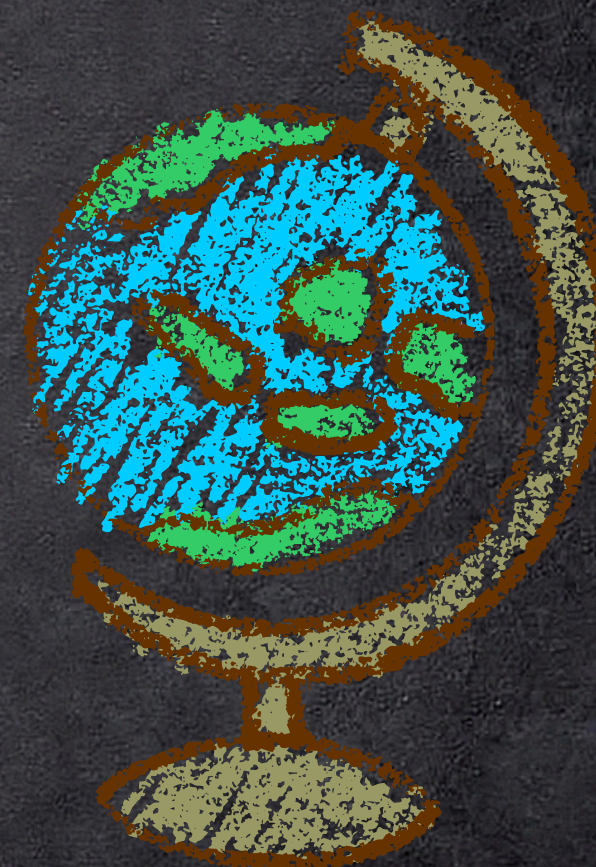




WIEIK

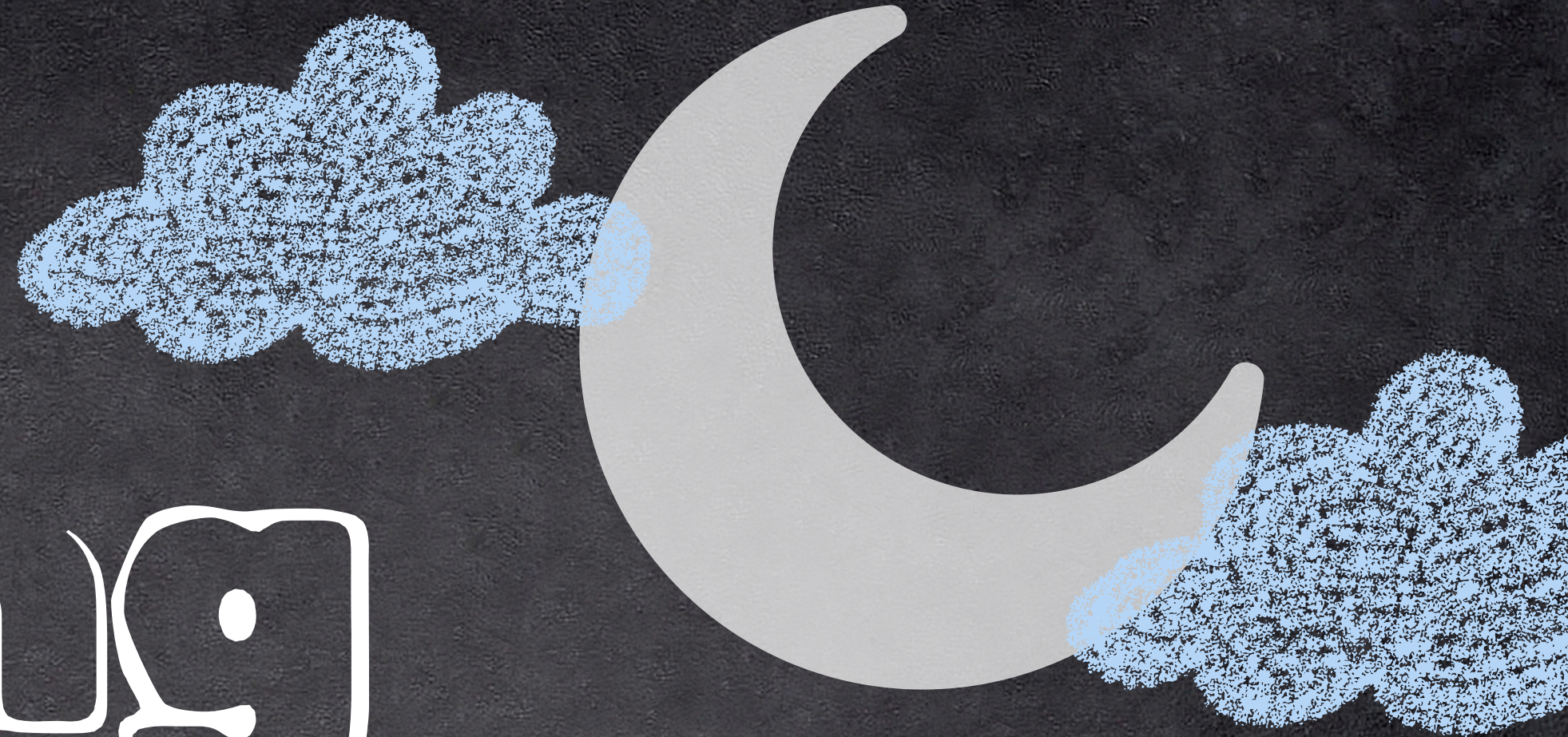


TWO





# GOOD Evening



**Let's get ready for our night:**



Warm up: Quick review of Week 1 vocabulary and numbers 1-10.



Practice fingerspelling names!



QUICK: Drill basic yes/no questions using facial expressions!



# VOCABULARY

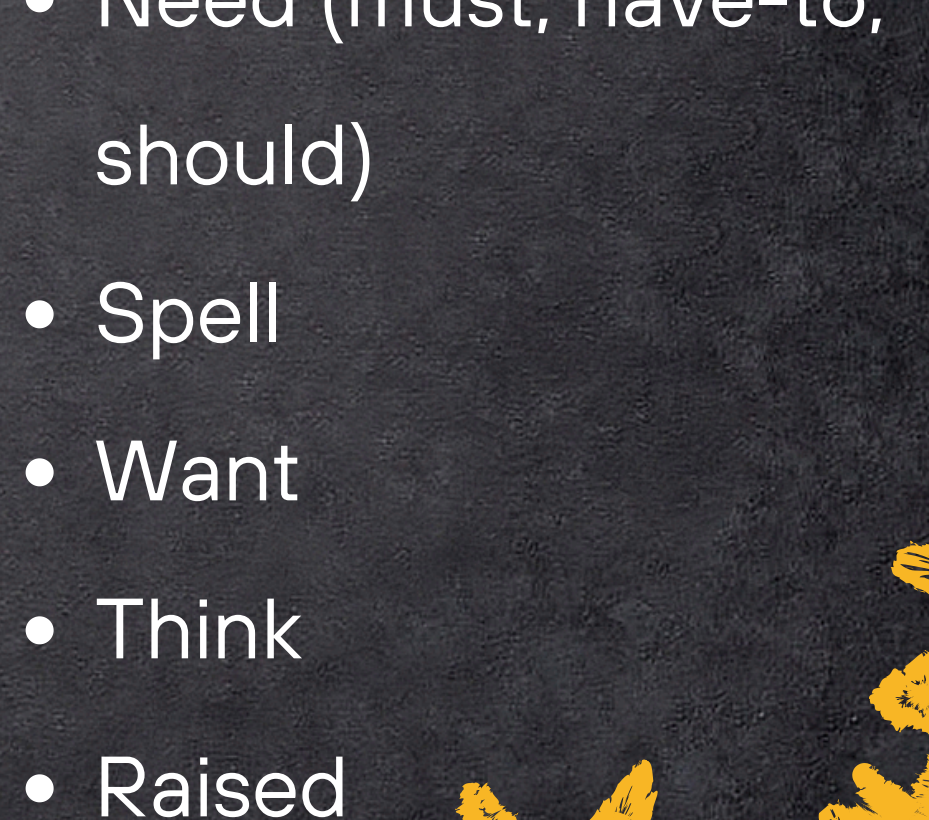
## Family & People

- Girl (woman, lady)
- Boy (male, man)
- Brother
- Sister
- Child (Children)
- Dad (parents, Grandpa)
- Mom (Grandma)
- Family
- Marriage
- Divorce

## Possession & Pronouns

- His/her/its
- My
- Our
- Their
- Yours

## Actions & Questions

- Have
  - Live (life, address)
  - Ask
  - Need (must, have-to, should)
  - Spell
  - Want
  - Think
  - Raised
- 
- A collection of colorful, hand-drawn style flowers in red, yellow, and purple, located in the bottom right corner of the page.



# VOCABULARY

## Descriptions & Responses

- Bad/Good
- Fine
- Favorite
- Single (alone, someone, just, only, something)
- So-so
- Big
- Small
- How
- How many

## Movement & Other

- Come (go, come on, go-there, go-to, attend)
- Hey
- All
- More
- Work

## Church Vocabulary

- |         |          |
|---------|----------|
| • Bless | • Pastor |
| • Faith | • Angel  |
| • Holy  | • Jesus  |

## Places

- Bathroom
- City
- House
- School
- Here
- From
- In







# ACTIVITIES

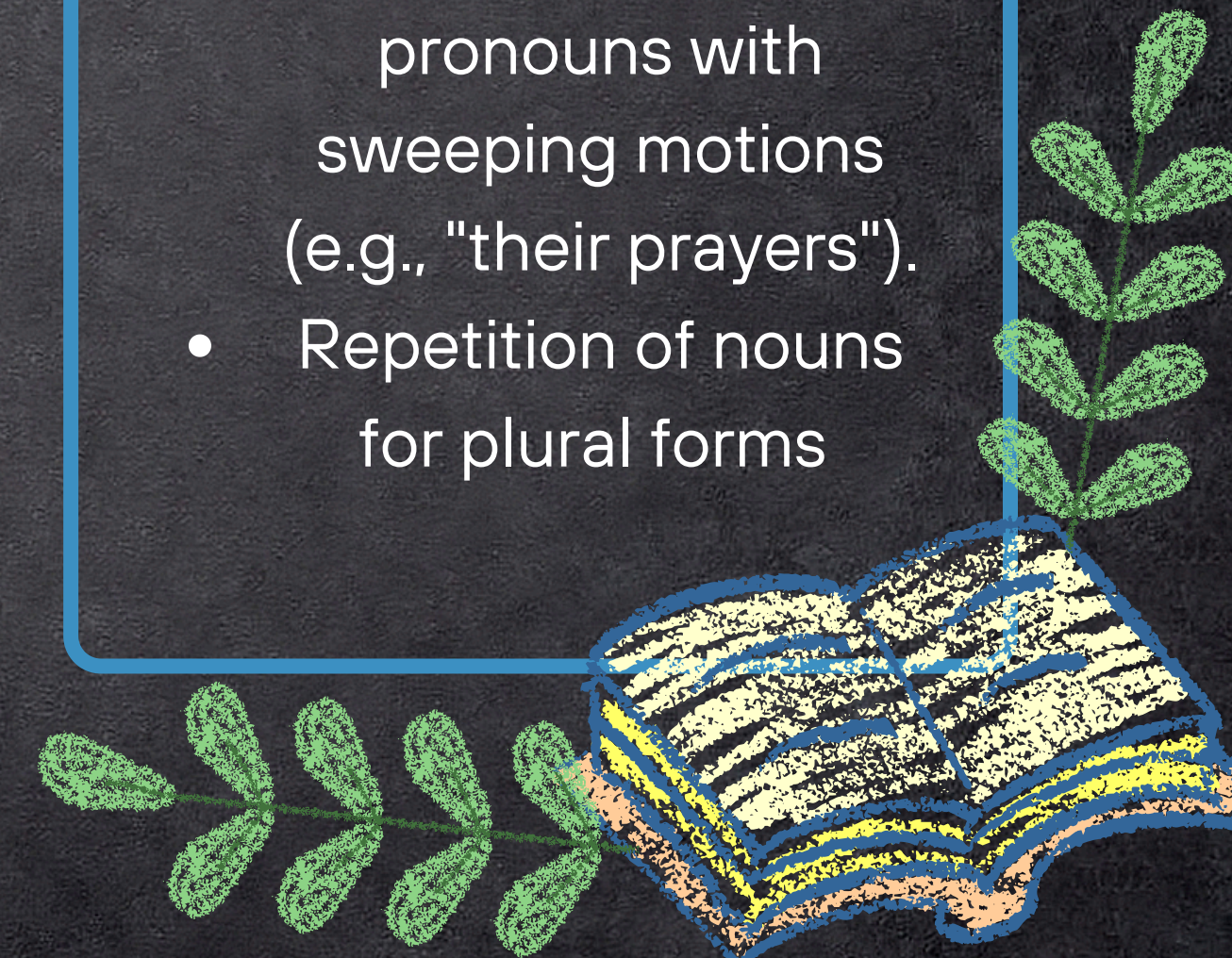
## Facial Expression Practice

- Role-play yes/no questions with appropriate non-manual markers
- Practice showing emotion intensity with signs

## Directional Signs Practice

- Use directional verbs like "ask" or "give" with

## Pluralization Drills

- Practice plural pronouns with sweeping motions (e.g., "their prayers").
  - Repetition of nouns for plural forms
- 



# INTERACTIVE ACTIVITIES

## Step 1

- Family Tree Activity
  - Students describe their families using signs



## Step 2

- Matching Game
  - Match signs to images or English words

## Step 3

- Receptive Practice
  - Teacher signs vocabulary for students to recognize and respond



The background is dark blue with several yellow stars and triangles of various sizes scattered around. A light blue rounded rectangle frames the central text.

# ANNOUNCEMENTS

- ASL Coffee in Bladwin area (Every third \_\_\_\_\_ of the month) 6 PM to 8 PM.
- Want to learn ASL church songs? Watch on Sunday at 11:15 AM at 3Circle Church. Great opportunity to practice.





THANK  
YOU





# RESOURCES

## FIRST 100 SIGNS:

- This page contains links to about a hundred basic ASL signs that are frequently used between parents and their young children.

