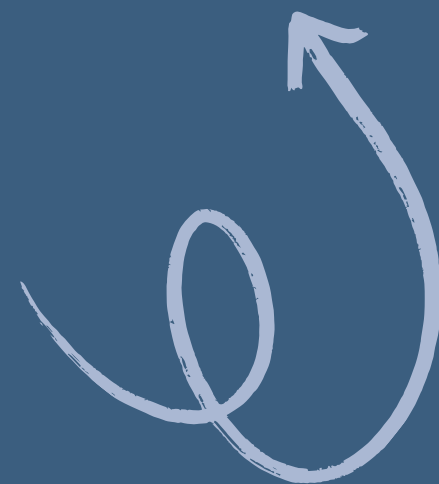


# ASL 3: Week

# 3

## Role Shift & Character Development

Fred Miller



# Weekly Focus

## Techniques for Clear Character Differentiation

Utilizing body shifts, eye gaze, and spatial awareness is essential for **effective storytelling** in ASL. These techniques help **distinguish between characters**, enhancing clarity and engagement in narratives.



# Learning Goals

## Core objectives for this week

### Character Separation

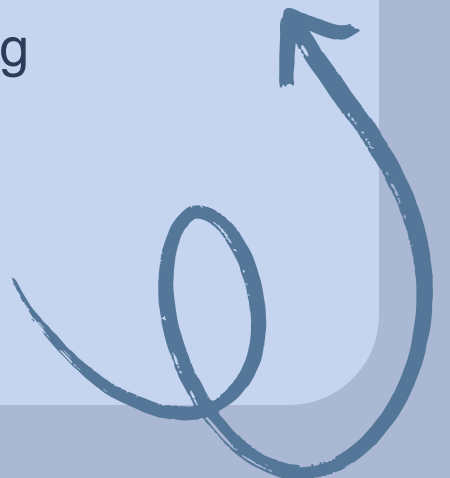
To effectively convey stories in ASL, it is crucial to **clearly separate characters** through distinct body movements and spatial referencing, enhancing narrative clarity and engagement.

### Consistent Roles

Maintaining **consistent roles** during storytelling is vital to prevent confusion among viewers, allowing them to easily follow the narrative and recognize character shifts throughout the performance.

### Storytelling Clarity

Role shifts improve overall **storytelling clarity** by providing visual cues that help audiences distinguish between multiple characters, enriching the ASL narrative experience and improving communication.



# Grammar Focus

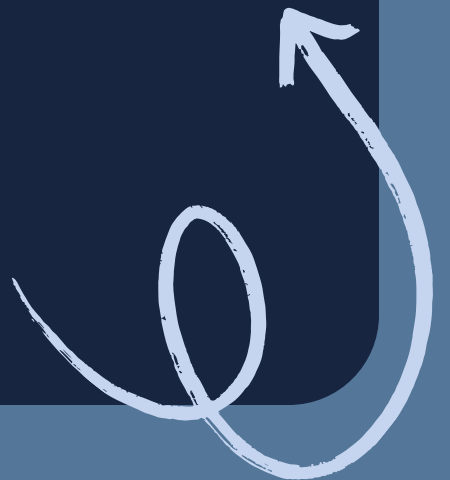
## Understanding Role Shift Techniques

### Role Shifting

Role shifting involves using body orientation to represent different characters, allowing the audience to clearly understand who is speaking and enhancing the narrative's clarity.

### Eye Gaze

Utilizing eye gaze effectively helps mark character perspective and shifts, ensuring that viewers can distinguish between characters and follow the story's progression fluidly.



# Key Skills Practiced

## Mastering Role Shift Techniques in ASL

### Body Shifting

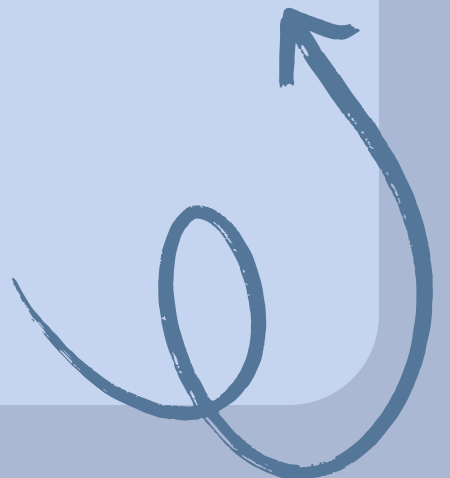
Full physical commitment is essential for portraying characters effectively; it allows signers to embody different personas, enhancing storytelling depth and audience engagement.

### Eye Gaze Control

Precise eye gaze indicates focus and perspective, helping viewers differentiate between characters; it enriches the narrative by establishing clear relationships and character dynamics.

### Character Placement

Clear spatial referencing is crucial for signers to establish character locations within the signing space; it allows for seamless transitions and clearer storytelling in ASL narratives.





## Role shifting



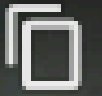
Copy link



Watch on  YouTube

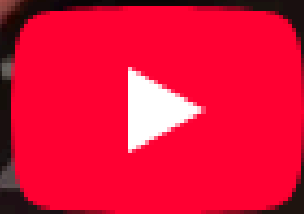


Eye gaze in ASL



Copy link

Eye gaze in ASL



Watch on  YouTube

# In-Class Activities

Engaging methods for character practice

## Warm-Ups

Role-shift warm-ups are designed to build **physical flexibility** and visual awareness, allowing learners to become comfortable with shifting roles in a dynamic storytelling environment.

## Story Retelling

Retelling familiar stories with multiple characters helps practice **role shifts**, enabling learners to apply their skills and gain confidence in their ability to differentiate characters effectively.

## Group Practice

Group storytelling sessions encourage collaboration and provide opportunities for peer feedback, enhancing the **learning experience** while allowing students to refine their role-shifting techniques in a supportive environment.



**Group 1**

**An Unexpected Adventure**

**Group 2**

**Ikru's First Day of School**

# Practice Your Character Skills

To master role shifts, practice telling a short story featuring 2–3 characters. Focus on distinct **body shifts** and eye gaze changes. Use mirrors or video for self-review and improvement.



# Commitment



Fully embody your characters for impact